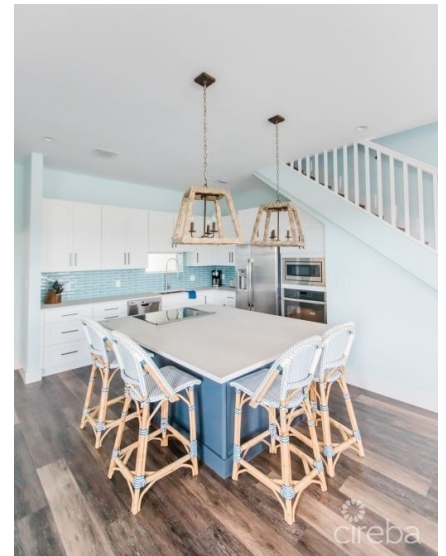
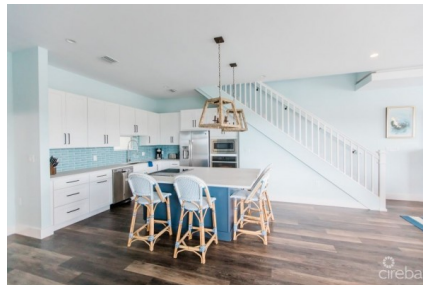
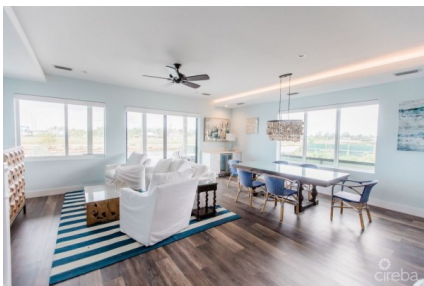
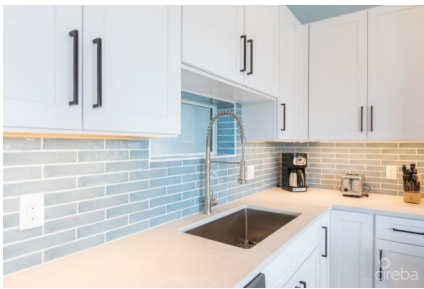


SEAHAVEN ORCHID VILLA

Spotts, Spotts and Prospect, Cayman Islands

MLS# 419232

US\$1,499,000





Kerri Kanuga
 345-916-7020
 kerri@tridentproperties.ky

Experience elevated coastal living in this exquisite 2 bedroom, 2.5 bathroom contemporary villa, spanning 2543 sq feet of thoughtfully designed elegance. Located in the private SeaHaven community along the serene North Sound coastline, this exceptional residence sits directly on a pristine, navigable waterway. Enjoy the ultimate waterfront lifestyle with your own private 30-foot boat dock, offering seamless access to the open water. Inside, refined comfort meets modern convenience. A private internal elevator conveniently leads to the second level bedroom suites. The waterfront master retreat impresses with sweeping views, a spacious custom walk-in closet, and a spa-inspired en-suite featuring a soaking tub, walk-in shower and sit down vanity. The second bedroom includes its on en-suite bath, perfect for guests or family. The open-concept kitchen, dining and living area is flooded with natural light and complemented by tasteful designer furnishings, creating a chic yet inviting atmosphere. A built-in office nook provides a dedicated space for remote work, while a full laundry room and one-car garage add everyday practicality. Step outside to the poolside covered patio, ideal for entertaining or unwinding by the water. Enjoy your private pool with integrated swim spa jets, or ascend to the spectacular rooftop terrace for panoramic views of the North Sound and surrounding waterways. Tucked away in a quiet, dead-end enclave, this villa offers a private sanctuary just 10 minutes from upscale shopping, fine dining and all the conveniences of island life

Essential Information

Type Stand Alone Home (For Sale)	Status New	MLS 419232	Listing Type Semi-Detached/Duplex/Triplex
--	----------------------	----------------------	---

Key Details

Bed 2	Bath 2.5	Block & Parcel 24E,653H19/H9	Den No
Year Built 2020	Pets Allowed Yes		

Additional Feature

Parcel 653H19/H9	Views Canal Front	Sea Frontage 100	Foundation Slab	Block 24E
Floor Level 1	Garage 1			

Property Feature

Furnished