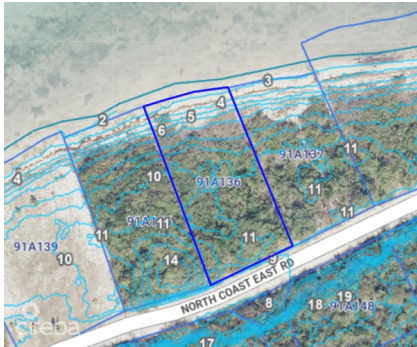


BETTY BAY 0.38 ACRE, LITTLE CAYMAN OCEANFRONT PARCEL

Little Cayman East, Cayman Brac and Little Cayman, Cayman Islands

MLS# 419211

CI\$249,000



Kerri Kanuga

345-916-7020

kerri@tridentproperties.ky

Tucked away on the peaceful northeast coast of Little Cayman, this exceptional 0.38-acre parcel in the coveted Betty Bay offers the perfect canvas for your dream beach house. With an impressive 12 feet of elevation above sea level from the road, you're not just building a home — you're securing peace of mind. Imagine waking up in paradise to the gentle lull of waves and stepping out onto your very own stretch of white sandy beach. It's raw, untouched Caribbean beauty at its finest. Betty Bay is known for its tranquility, pristine environment, and exclusivity — making this a rare opportunity to own in one of Little Cayman's most desirable locations. Whether you're planning a private retreat or a barefoot luxury getaway, this parcel offers the space, elevation, and setting to make your vision a reality. Oceanfront parcels of this quality in Little Cayman don't come around often. Don't let this one slip by.

Essential Information

Type
Land (For Sale)

Status
New

MLS
419211

Listing Type
**Little
Cayman/Cayman Brac**

Key Details

Width
90.00

Block & Parcel
91A,136

Depth
190.00

Block & Parcel
91A,136

Den
No

Acreage
0.3800

Additional Feature

Views
Beach Front

Sea Frontage
90

Road Frontage
192

Soil
Rock

Block
91A

Parcel
136