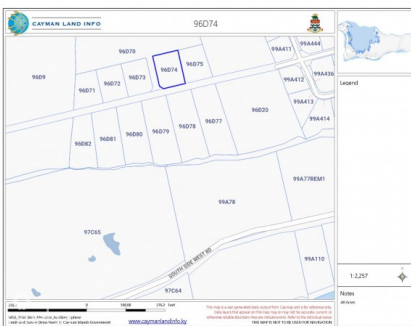
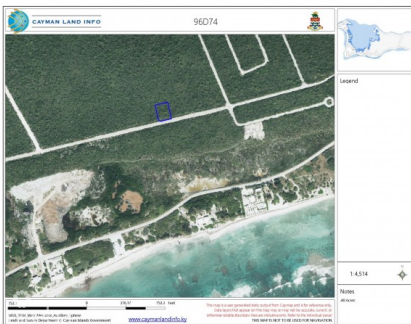


BRAC BLUFF LAND .40 ACRE

Cayman Brac Center, Cayman Brac and Little Cayman, Cayman Islands

MLS# 418715

CI\$55,000





Kerri Kanuga
 345-916-7020
 kerri@tridentproperties.ky

Discover the opportunity to own a piece of paradise on the scenic Bluff of Cayman Brac! This high-and-dry parcel offers the perfect location to build your dream home or to land bank for future appreciation, as land values on Cayman Brac continue to soar. Situated just across the street from the Bluff Edge lots currently on the market, this property boasts a strategic location that offers privacy and stunning natural surroundings. Adjoining lots are also available for sale, making it an excellent choice for those seeking additional space or investment potential. Convenience meets serenity here, with the property located just minutes from the Charles Kirkconnell International Airport, restaurants, shopping, grocery stores, and Cayman Brac’s top attractions. Enjoy outdoor adventures like rock climbing, exploring the famous Bluff Caves, and birdwatching, where you may spot the endangered Booby Bird and the vibrant Cayman Brac Parrot. For water enthusiasts, the island is renowned for world-class fishing and scuba diving, offering breathtaking underwater experiences. Don’t miss this chance to invest in the future while enjoying the natural beauty and tranquility of Cayman Brac. Get in touch today to secure this incredible piece of property and start turning your dream into a reality!

Essential Information

| | | | |
|--------------------------------|--------------------------|----------------------|--|
| Type Land (For Sale) | Status Current | MLS 418715 | Listing Type Little Cayman/Cayman Brac |
|--------------------------------|--------------------------|----------------------|--|

Key Details

| | | | | |
|--------------------------|---------------------------------|------------------------|---------------------------------|------------------|
| Width 151.00 | Block & Parcel 96D,74 | Depth 112.00 | Block & Parcel 96D,74 | Den No |
| Acreage 0.4000 | | | | |

Additional Feature

| | | |
|-----------------------------|---------------------|----------------------------|
| Block 96D | Parcel 74 | Views Water View |
| Road Frontage 151 | | |