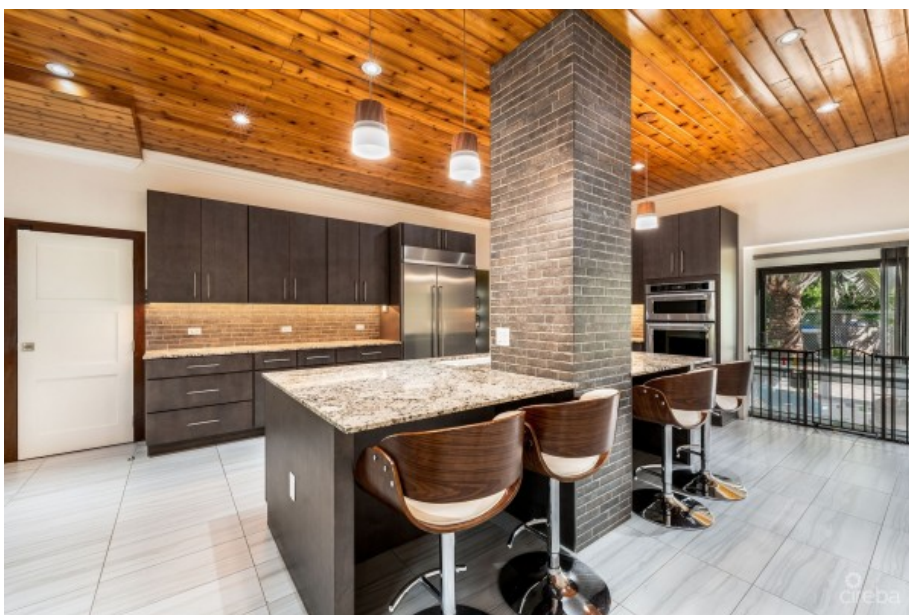
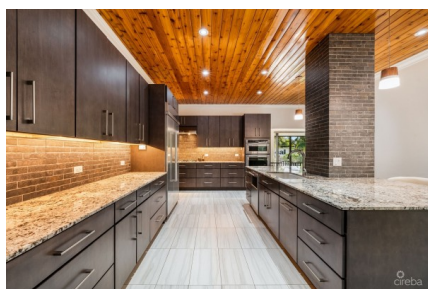


GLADE DRIVE 44, WEST BAY HOME & APARTMENT

W Bay North East, West Bay, Cayman Islands

MLS# 418573

CI\$1,225,000





Kerri Kanuga
 345-916-7020
 kerri@tridentproperties.ky

Exceptional Coral Stone Home with Income Potential in West Bay
 Located in a peaceful community near The Shores in West Bay, this beautifully crafted home combines luxury and convenience. Just a two-minute drive from Esterley Tibbetts Highway via Batabano Road, you're close to popular restaurants, beaches, and Seven Mile Beach. The ground floor is designed for both comfort and functionality, featuring an oversized kitchen and entertainment space, perfect for hosting or family gatherings. The open-plan living and dining areas are accompanied by a spacious laundry room, two well-sized bedrooms, and two and a half bathrooms. Enjoy your very own generously sized master suite, complete with an en-suite bath and a walk-in closet fitted with custom floor-to-ceiling cabinetry. Upstairs, a fully licensed AirBnB suite offers excellent income potential, that can average upwards of CI\$30k annually. This one-bedroom, one-bath apartment has a private entrance, a cozy living area, modern kitchen, laundry facilities, and a private balcony with garden views. It can also connect seamlessly to the main home, offering flexibility in its use. The property is designed for comfort and practicality with multi-zone central AC, a backup generator, gas appliances, and generous outdoor living spaces. The lush, mature garden features fruit and palm trees, while the paved yard includes a built-in outdoor kitchen, a wraparound driveway, and ample parking. Whether you're searching for a forever home or a smart investment, this property is a must-see. Reach out for more information and to schedule a viewing.

Essential Information

Type Stand Alone Home (For Sale)	Status Current	MLS 418573	Listing Type Single Family Home
--	--------------------------	----------------------	---

Key Details

Bed 3	Bath 3.5	Block & Parcel 9A,315	Den No
Year Built 2019	Acreage 0.3200		

Additional Feature

Block 9A	Lot Size 0.32	Parcel 315	Views Garden View
Foundation Slab	Zoning Low Density residential		

Property Feature

Furnished

Den