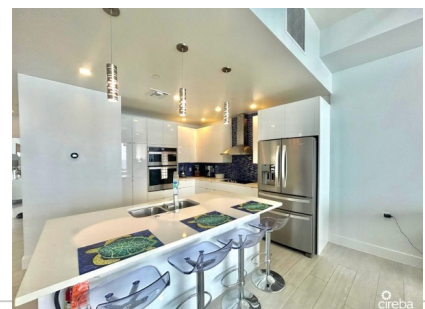
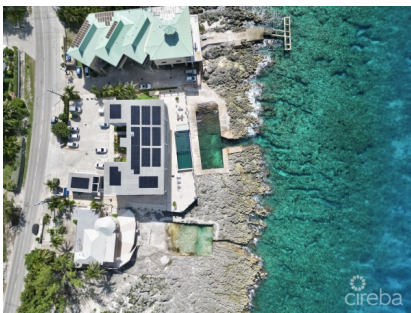


## LIGHTHOUSE POINT RESIDENCES - UNIT 201

W Bay North West, West Bay, Cayman Islands

MLS# 418568

**US\$1,500,000**





**Kerri Kanuga**  
 345-916-7020  
 kerri@tridentproperties.ky

Introducing the pinnacle of sophisticated living at Lighthouse Point Residences Unit 201. This exquisite second-floor unit redefines luxury, providing a serene sanctuary with the breathtaking backdrop of West Bay’s most coveted location. Unit 201 offers an impeccably designed one-bedroom, one-bathroom space, encompassing a generous 1035 square feet. The floor plan has been meticulously crafted to optimize functionality and comfort, ensuring a lifestyle of unparalleled refinement. Situated in a premier oceanfront location, residents of Unit 201 are privileged with sweeping views of the turquoise waters and direct access to the pool deck, merging indoor and outdoor living effortlessly. Picture yourself waking up to the soothing sound of the ocean and ending your day with magnificent sunset vistas from your private balcony. Nestled in one of West Bay’s most prestigious neighborhoods, Lighthouse Point Residences provide a tranquil escape from the hustle and bustle of urban life. The serene surroundings and high-end amenities of Strata 905 offer a unique blend of exclusivity and relaxation, epitomizing the essence of coastal luxury. Strata fees are conveniently paid quarterly, ensuring a seamless and hassle-free homeownership experience for our esteemed residents. Embrace the essence of luxurious coastal living at Lighthouse Point Residences. Contact us today to arrange a private viewing and embark on a journey to your dream home by the sea.

## Essential Information

Type <b>Condominium (For Sale)</b>	Status <b>Current</b>	MLS <b>418568</b>	Listing Type <b>Condo</b>
---------------------------------------	--------------------------	----------------------	------------------------------

## Key Details

Block & Parcel <b>1E,14H5</b>	Den <b>No</b>	Year Built <b>2020</b>
----------------------------------	------------------	---------------------------

Pets Allowed  
**Yes**

## Additional Feature

Foundation <b>Slab</b>	Floor Level <b>2</b>
---------------------------	-------------------------

## Property Feature

Furnished