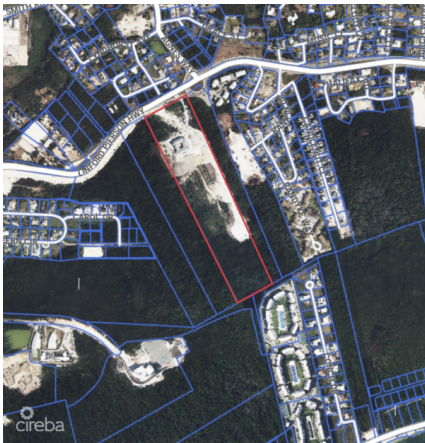


## BUTTONWOOD PARK DEVELOPMENT PARCEL

George Town Centr, Seven Mile Beach, Cayman Islands

MLS# 418563

**US\$2,625,000**





**Kerri Kanuga**  
 345-916-7020  
 kerri@tridentproperties.ky

Introducing Buttonwood Park and a unique opportunity to purchase Development Parcel with this pre-established and growing community. This parcel collection spans 110,207 square feet, offering ample space for a variety of residential development possibilities. Strategically located, the parcel is in close proximity to the Owen Roberts International Airport, ensuring convenient travel access. Additionally, it is just a short distance from Downtown Georgetown, providing easy access to essential services, dining, and shopping options. The property is also a mere 15-minute drive from the renowned Seven Mile Beach, one of the most sought-after destinations in the Cayman Islands. This location offers potential developers a unique blend of accessibility and inclusivity, making it an ideal spot for a well thought out residential development in a walkable pre established community. The Buttonwood Development Parcel is positioned to benefit from the ongoing growth and development in Buttonwood Park, existing and future stakeholders include the newly opened Island Primary, the soon to open CH High School and the mixed use centre The Shops at Buttonwood set to break ground in Q1 or 2025 making this a valuable asset for forward-thinking developers. Don't miss this exceptional opportunity to be part of a thriving community in one of the Caribbean's most desirable locations. For more information or to schedule a viewing, please contact us.

## Essential Information

|                                |                          |                      |  |
|--------------------------------|--------------------------|----------------------|--|
| Type<br><b>Land (For Sale)</b> | Status<br><b>Current</b> | MLS<br><b>418563</b> | Listing Type<br><b>Low Density Residential</b> |
|--------------------------------|--------------------------|----------------------|--|

## Key Details

|                          |   |                        |   |                  |
|--------------------------|---|------------------------|---|------------------|
| Width<br><b>385.00</b>   | Block & Parcel<br><b>20E,87H9,H10,H11</b> | Depth<br><b>316.00</b> | Block & Parcel<br><b>20E,87H9,H10,H11</b> | Den<br><b>No</b> |
| Acreage<br><b>2.5300</b> |   |                        |   |                  |

## Additional Feature

|                                 |                             |                             |                      |                     |
|---------------------------------|-----------------------------|-----------------------------|----------------------|---------------------|
| Parcel<br><b>87H9, H10, H11</b> | Views<br><b>Garden View</b> | Road Frontage<br><b>133</b> | Soil<br><b>Other</b> | Block<br><b>20E</b> |
|---------------------------------|-----------------------------|-----------------------------|----------------------|---------------------|