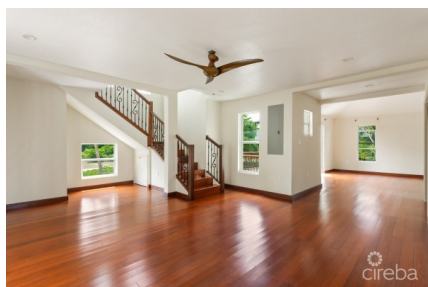


FALLSREACH CLOSE 19, BEACH BAY HOME

Lower valley, Rum Point/Kaibo, Eastern Districts & North Side, Cayman Islands

MLS# 418435

CI\$585,000





Kerri Kanuga
 345-916-7020
 kerri@tridentproperties.ky

Nestled in the serene Beach Bay area, this charming home sits on 0.33 acres offering endless potential to become your dream home. Surrounded by palm and mature fruit trees, the property feels like a peaceful oasis. With approximately 2,500 sqft of indoor space, the current 2 bed 3 bath layout can easily be converted to a 3 bed 3 bath by adding an interior wall. A recent light renovation, including fresh paint, highlights the home's features, while abundant natural light enhances the beautiful wood vinyl flooring throughout. Relax on the two spacious patios, perfect for enjoying the lush green surroundings or hosting BBQs. The master suite on the second floor boasts a walk-in closet and a generous bathroom with a free-standing tub. This home is just a short drive from the shops and amenities of Countryside Shopping Center. It's also only minutes from a peaceful beach with a scenic cove and near the future site of the Mandarin Oriental Hotel, in a neighbourhood with upscale standalone homes along the waterfront. Reach out today to schedule a viewing of this lovely property in Beach Bay.

Essential Information

| | | | |
|--|--------------------------|----------------------|---|
| Type Stand Alone Home (For Sale) | Status Pen/Con | MLS 418435 | Listing Type Single Family Home |
|--|--------------------------|----------------------|---|

Key Details

| | | | |
|---------------------------|--------------------------|---------------------------------|------------------|
| Bed 2 | Bath 3 | Block & Parcel 32D,92 | Den No |
| Year Built 2004 | Acreage 0.3300 | | |

Additional Feature

| | | | |
|--------------------------------------|---|---------------------|-----------------------------|
| Block 32D | Lot Size 0.33 | Parcel 92 | Views Garden View |
| Foundation Pier & Beam | Zoning Medium Density Residential | | |