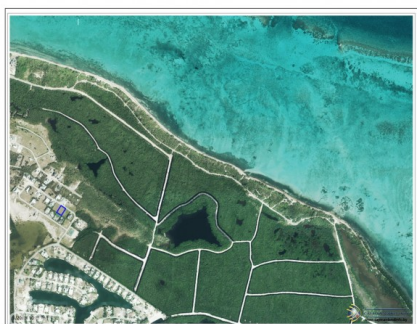


PRIME LOCATION SHORECREST CIRCLE HOUSE LOT

W Bay North East, West Bay, Cayman Islands

MLS# 417055

CI\$425,000





Kerri Kanuga
 345-916-7020
 kerri@tridentproperties.ky

Welcome to Shorecrest Circle, where an incredible opportunity awaits you! This vacant land, located in the highly sought-after Shores neighbourhood, is now available for sale. Nestled within a gated community, this prime location offers exclusivity, security, and a truly serene living experience. Boasting a generous lot size of 100' by 143' depth, this property provides ample space for you to create your dream home. With its low density zoning, this parcel of land provides the perfect canvas for your architectural aspirations. Convenience is key when it comes to this remarkable location. Just minutes away, discover the world-renowned Seven Mile Beach and the vibrant Camana Bay. Whether you enjoy lounging on pristine sandy shores or indulging in exquisite dining and shopping experiences, everything you desire is within reach. For those seeking an active lifestyle, this community offers more than just a place to call home. Take advantage of the shared boat launch for endless adventures on the crystal-clear waters. Engage in friendly matches on the tennis and pickleball courts with neighbours turned friends. Rest assured that your investment is protected by a robust neighborhood covenant and fully manned security entrance. This tranquil enclave provides a quiet and peaceful atmosphere to create your personal paradise. Additionally, an easy commute to work ensures you can strike a perfect balance between professional demands and personal leisure. Don't miss out on this incredible opportunity to build your dream home in the prestigious Shores neighborhood. Embrace a lifestyle of luxury, serenity, and convenience. Contact me today to make this exceptional property yours! Image courtesy of www.caymanlandinfo.ky.

Essential Information

Type Land (For Sale)	Status Reduced	MLS 417055	Listing Type Low Density Residential
--------------------------------	--------------------------	----------------------	--

Key Details

Width 100.00	Block & Parcel 9A,749	Depth 143.00	Block & Parcel 9A,749	Den No
Acreage 0.3299				

Additional Feature

Block 9A	Parcel 749	Views Garden View
Zoning Low Density residential		