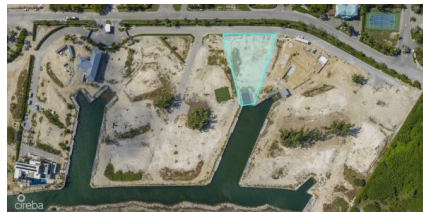


## DIAMOND'S EDGE ESTATE LOT

W Bay North West, West Bay, Cayman Islands

MLS# 416911

**US\$2,375,000**





**Kerri Kanuga**  
 345-916-7020  
 kerri@tridentproperties.ky

Situated in the prestigious Diamonds Edge gated community, this location is nestled between the exclusive Laliq Point in Crystal Harbour and the North Sound Golf Club. This enchanting house lot offers a generous 0.62 acres of prime land, making it one of the most attractively priced lots in the area. Prepare to be captivated by the unobstructed panoramic ocean views that greet you each day. With the lot elevated 8 feet above sea level, you can enjoy breathtaking vistas while feeling a sense of security and tranquility. Immerse yourself in the soothing ambiance as you relax by the native stone sea wall, which embraces the oceanfront canals and ensures long-term reinforcement and stability. Security is of utmost importance here, as the community boasts 24-hour manned and gated security, providing you with peace of mind. For those with a passion for boating, direct boat access from the property allows you to effortlessly explore the pristine waters of the North Sound. The lot is adorned with a high-end cantilevered 8ft dock, adding a touch of elegance to your waterfront experience. The meticulously designed streetscaping enhances the aesthetic appeal of the community, creating an atmosphere of refined beauty. Located on the sought-after Seven Mile Beach corridor, this lot benefits from its prime position, granting easy access to the island's best restaurants, vibrant Camana Bay, and an array of amenities. This exceptional house lot in Diamonds Edge presents an incredible opportunity to own a piece of paradise. With its affordable price, unbeatable location, awe-inspiring views, and top-notch amenities close by, it truly embodies the essence of luxury living in Grand Cayman. Don't miss the chance to turn your dream of island living into a reality.

## Essential Information

Type <b>Land (For Sale)</b>	Status <b>Current</b>	MLS <b>416911</b>	Listing Type <b>Low Density Residential</b>
--------------------------------	--------------------------	----------------------	--

## Key Details

Width <b>171.00</b>	Block & Parcel <b>17A,363</b>	Depth <b>229.00</b>	Block & Parcel <b>17A,363</b>	Den <b>No</b>
------------------------	----------------------------------	------------------------	----------------------------------	------------------

Acreage  
**0.6162**

## Additional Feature

Zoning <b>Hotel/Tourism</b>	Block <b>17A</b>	Parcel <b>363</b>	Views <b>Canal Front</b>
	Sea Frontage <b>47</b>	Soil <b>Marl</b>	

## Property Feature

Road Frontage