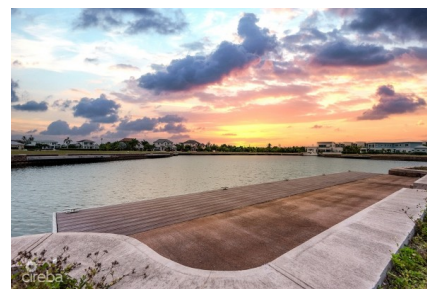
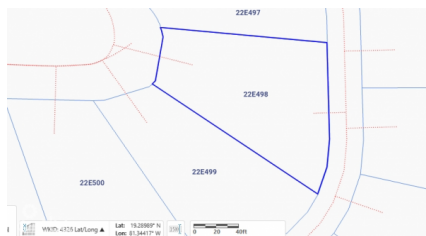
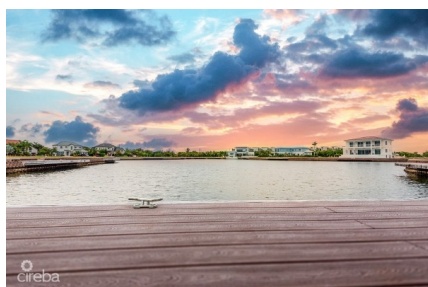


## HARBOUR REACH LAND PARCEL

Prospect, Spotts and Prospect, Cayman Islands

MLS# 416715

**CI\$750,000**





**Kerri Kanuga**  
 345-916-7020  
 kerri@tridentproperties.ky

Imagine beautiful sunset views from this idyllic west facing lot in the gated community of Harbour Reach in Grand Harbour. Includes plans for a stunning 5,750sq ft house designed by renowned architects Trio Architecture. Planning permission approved & strata approved. Construction drawings complete, along with solar, pool & landscape design & interior design concept. The unique shape at the widest part of the canal together with the location of the lot provides impressive street frontage and a beautiful view over the lagoon portion of the Harbour Reach canal - the widest part of the canal & greatest distance from opposite side neighbours. The rear of the property faces west for afternoon sun in the pool and beautiful sunset views across the water. Boat dock included for direct access onto the north sound. Total lot size 14,648 sq ft / 0.34 acres.

## Essential Information

Type <b>Land (For Sale)</b>	Status <b>Current</b>	MLS <b>416715</b>	Listing Type <b>Low Density Residential</b>
--------------------------------	--------------------------	----------------------	--

## Key Details

Width <b>85.70</b>	Block & Parcel <b>22E,498</b>	Depth <b>148.00</b>	Block & Parcel <b>22E,498</b>	Den <b>No</b>
Acreage <b>0.3363</b>				

## Additional Feature

Views <b>Canal Front, Canal View</b>	Zoning <b>Low Density residential</b>	Sea Frontage <b>75</b>	Road Frontage <b>136</b>	Block <b>22E</b>	Parcel <b>498</b>
Soil <b>Other</b>					