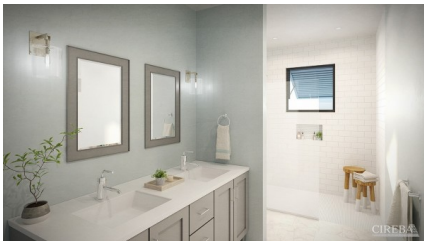
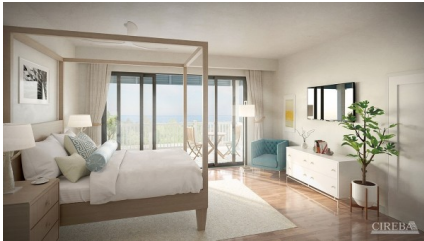


## OLEA TWO-STOREY TOWNHOME - RESIDENCE 222

W Bay Bch South, West Bay, Cayman Islands

MLS# 414182

**US\$1,949,950**





**Kerri Kanuga**  
 345-916-7020  
 kerri@tridentproperties.ky

Home is where the heart is, and the townhomes are at the heart of OLEA. Echoing classic Caribbean architectural heritage rendered in contemporary lines, this two-storey townhome features an open floor plan, double carport and private garden. All bedrooms have an ensuite bathroom and the master boasts a spacious walk-in closet. Residents will enjoy central amenities including beautifully landscaped common areas, a resort-style pool and a fully-equipped gym. Live in one of the most desirable neighbourhoods in Grand Cayman’s real estate portfolio. OLEA is a waterfront community located to the south of Camana Bay’s Town Centre. Adjacent to Cayman International School, it offers easy connectivity to the Town Centre and Seven Mile Beach. OLEA’s amenities will include a lazy river flowing into a resort-style pool, beautifully landscaped common areas and a fully equipped gym. All residences will have solar panels and be cooled with the latest geothermal systems. Interiors will integrate elements such as LED lighting, energy-efficient appliances and water-conserving plumbing fixtures. Spanning 685 acres from Seven Mile Beach and the Caribbean Sea to the North Sound, Camana Bay is the islands premier destination for global business and Caribbean community as well an epicentre of fashion, food, entertainment, culture and fun.

## Essential Information

Type <b>Stand Alone Home (For Sale)</b>	Status <b>Current</b>	MLS <b>414182</b>	Listing Type <b>Standalone Home (Part of Strata)</b>
--	--------------------------	----------------------	---

## Key Details

Bed <b>3</b>	Bath <b>3.5</b>	Block & Parcel <b>13C,4REM1H222</b>	Den <b>No</b>
Year Built <b>2025</b>	Pets Allowed <b>Yes</b>		

## Additional Feature

Block <b>13C</b>	Parcel <b>4REM1H222</b>	Views <b>None</b>
---------------------	----------------------------	----------------------